

Cinetic Landis Grinder Group



Landis, Gardner, Guistina, Cincinnati Milacron

Landis History



Landis Tool Co.
Incorporated
1897



Gardner Acquired by
Landis Tool Co.
1950



1968

1894
Landis Co. Founded
by A.B. & F.F. Landis



1905
Gardner Machine Co.
Established

GARDNER

1958
John Lund Co.
Acquired by Landis



Pratt & Whitney / Besly
Acquired
1991



Cranfield
Acquired
1995

Landis Gardner



1983
CITCO Acquired
by Litton



1994
Litton's Commercial
Businesses
Spun-off to Form
Western Atlas



1996
Landis & Gardner
Consolidated

1997

UNOVA

Goldcrown Acquired by
Landis Gardner
1997



1997
UNOVA Spun-off
From Western Atlas

GOLDCROWN

1998
Cincinnati Grinding
Division Acquired

1999
Global Reorganization

2001
Landis & Hebron
Consolidated

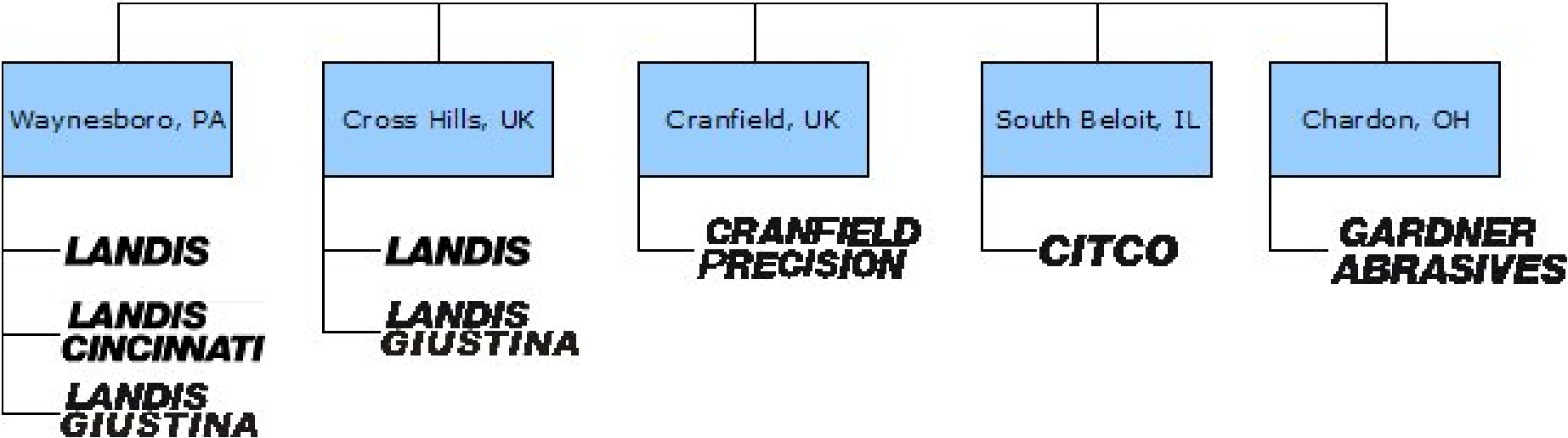
2005

Gardner Abrasives
Consolidated - Calhoun
to South Beloit
2006

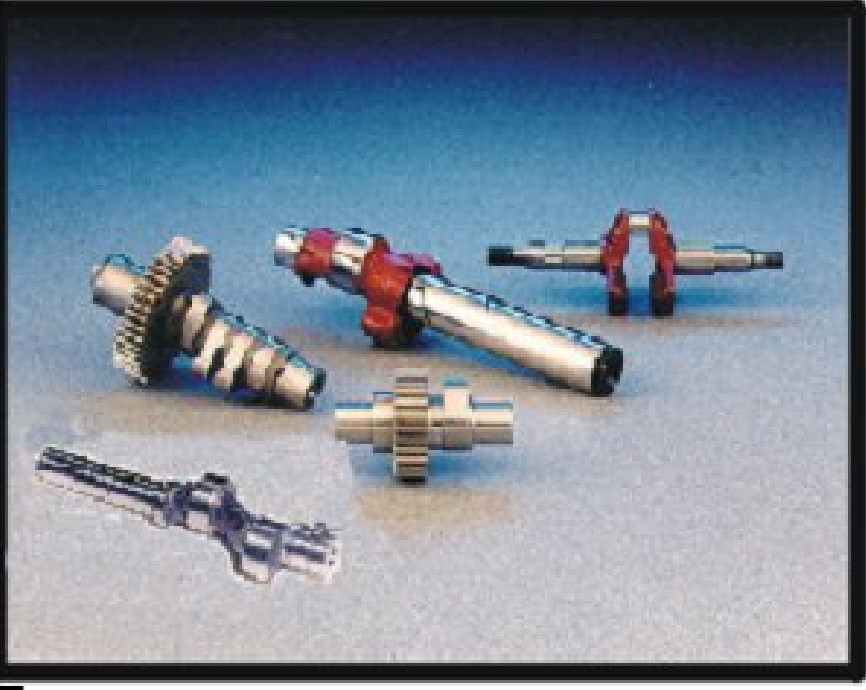
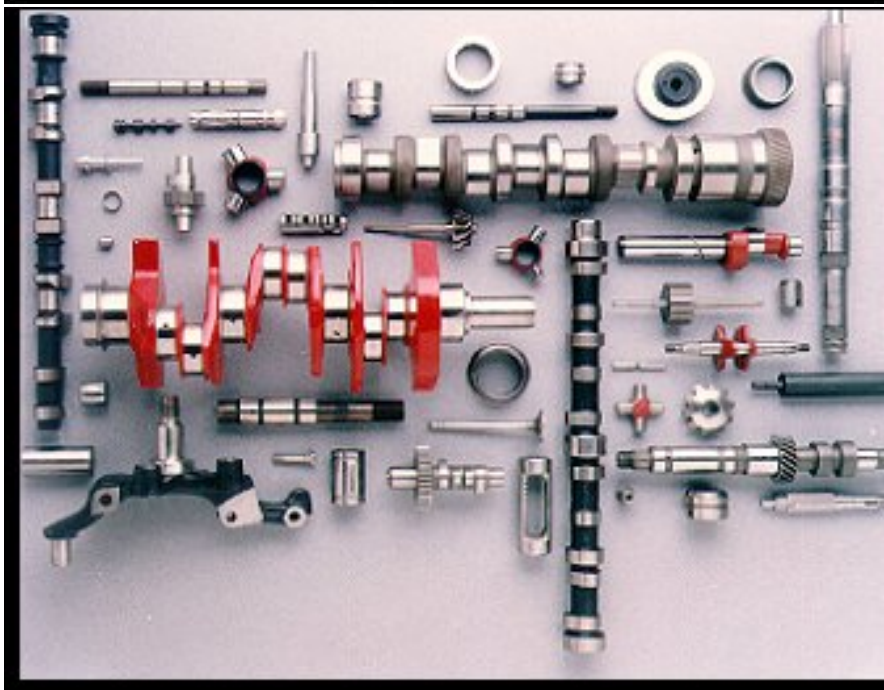


GARDNER

Divisions



Application Solutions



Precision Cylindrical and Disc Grinding Machines.





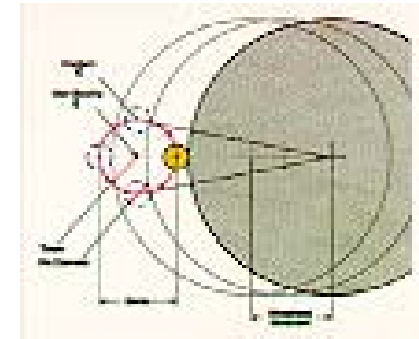
1989 - First Modular Single Workhead Crankpin Grinding System



1990 - Landis Develops "Process Optimization" Software Techniques



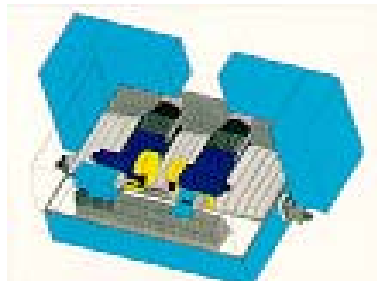
1991 - First Production Line of Multi-Head Abrasive Belt Cam Lobe Grinders



1994 - Landis Pioneers Orbital Crankpin Grinding Technology



1995 - Adcole Compensation Software for Orbital Grinding



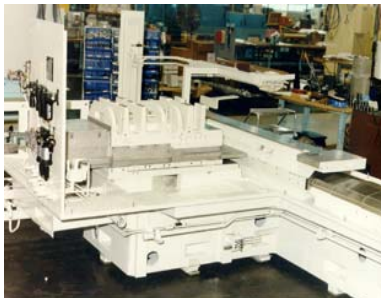
1995 - First Landis CNC Twin Wheelhead Cylindrical Grinder



1996 - First "Flexible" CNC Crankpin / Cam Lobe Grinder



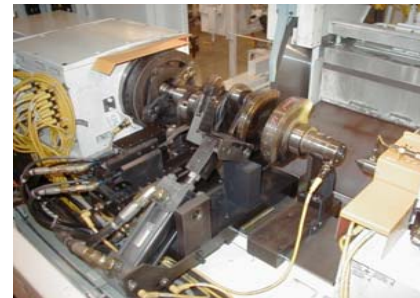
1997 - Twin Wheel Diesel Crankpin Grinder



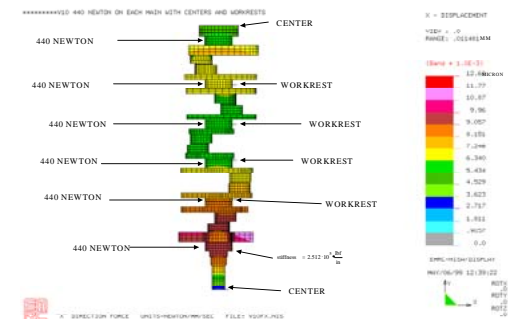
1998 - First Use of Linear Motor on CNC Cam Lobe Grinder



1998 - 6400 Control Implemented



1999 - Thrustwall Bump Grind Crankshaft Grinder



1999 - Process FEA