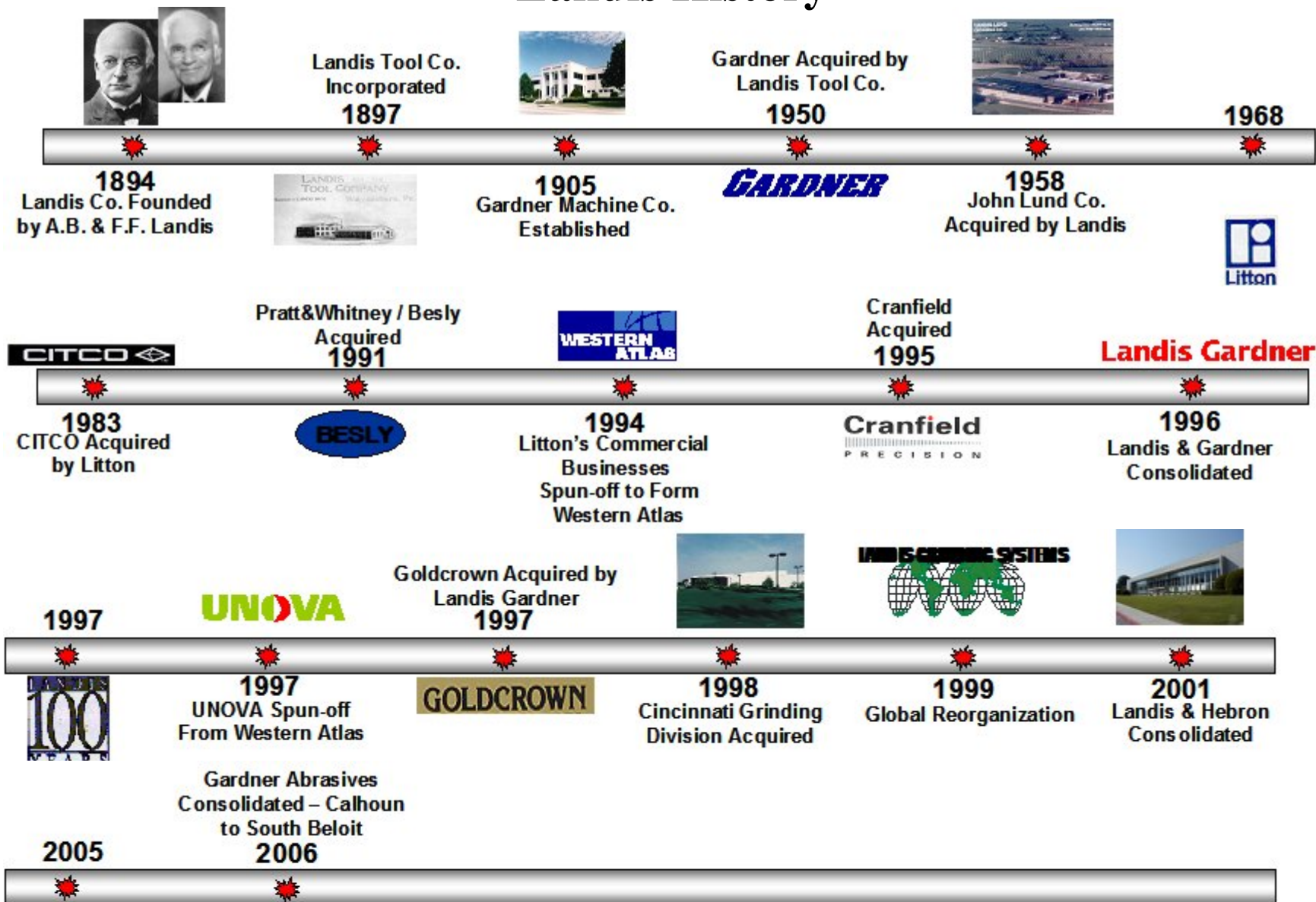


Cinetic Landis Grinder Group

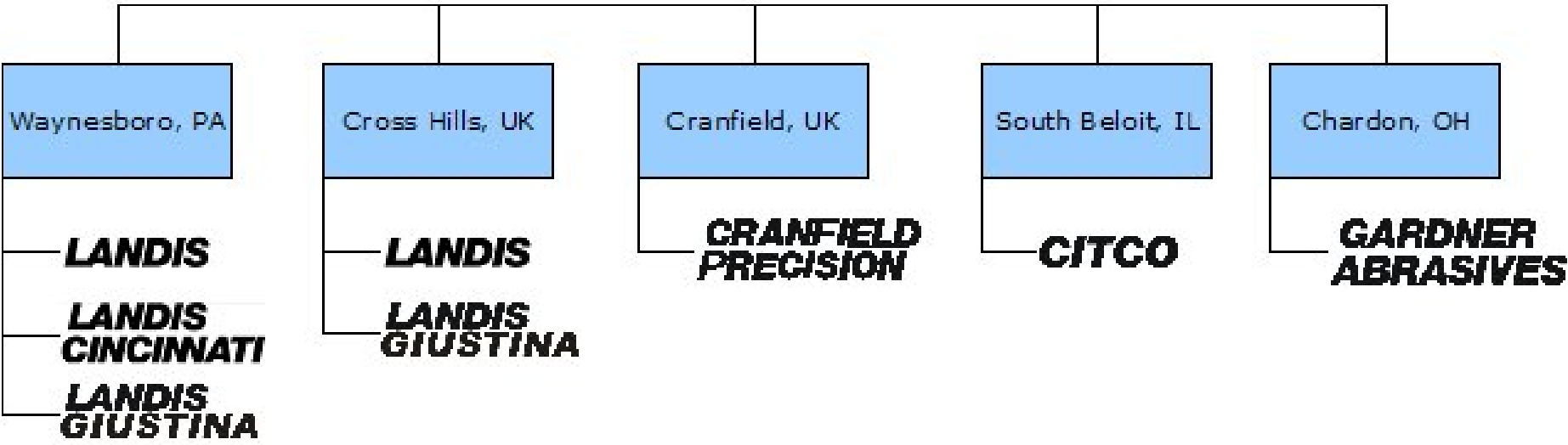


Landis, Gardner, Guistina, Cincinnati Milacron

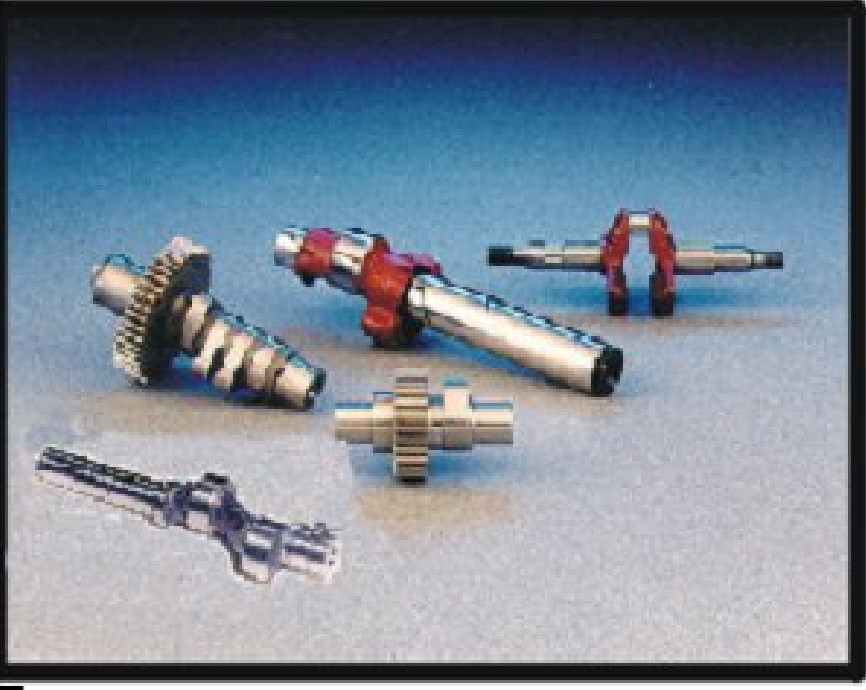
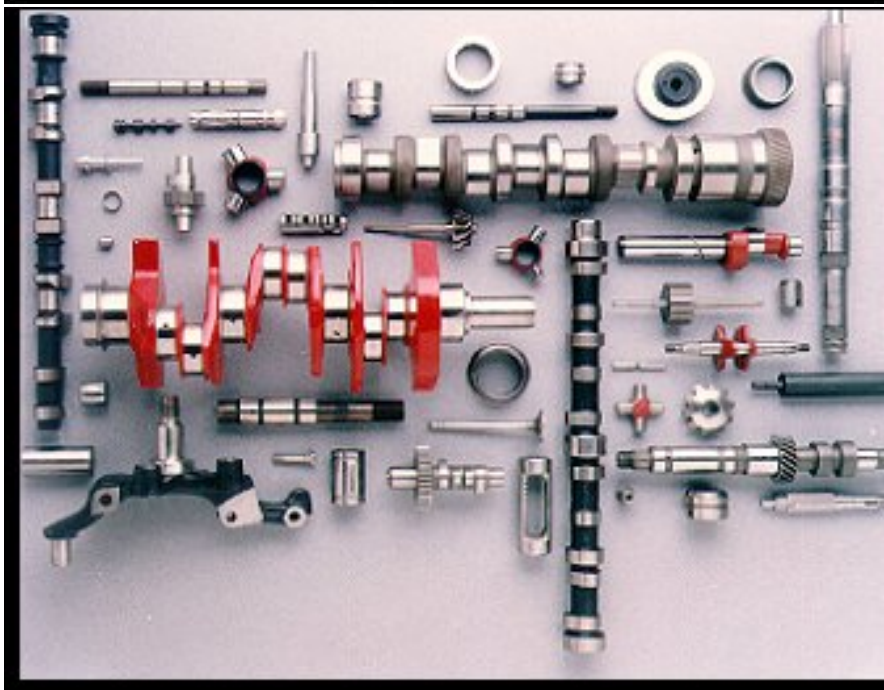
Landis History



Divisions



Application Solutions



Precision Cylindrical and Disc Grinding Machines.



Precision Cylindrical and Disc Grinding Machines.





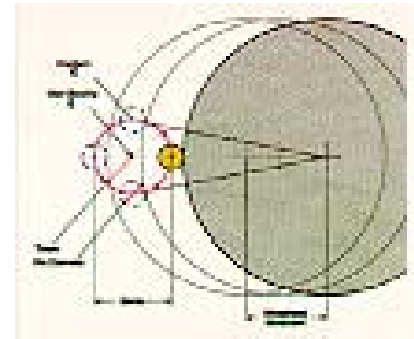
1989 - First Modular Single Workhead Crankpin Grinding System



1990 - Landis Develops "Process Optimization" Software Techniques



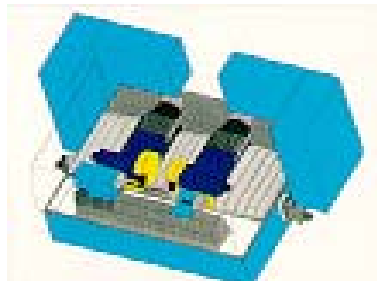
1991 - First Production Line of Multi-Head Abrasive Belt Cam Lobe Grinders



1994 - Landis Pioneers Orbital Crankpin Grinding Technology



1995 - Adcole Compensation Software for Orbital Grinding



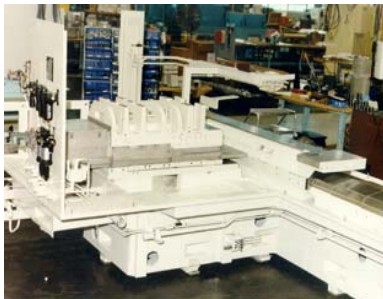
1995 - First Landis CNC Twin Wheelhead Cylindrical Grinder



1996 - First "Flexible" CNC Crankpin / Cam Lobe Grinder



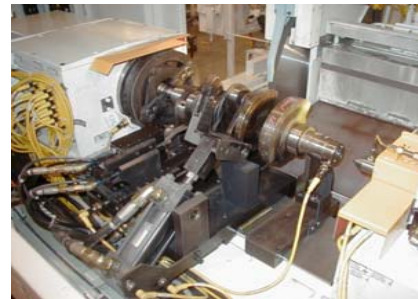
1997 - Twin Wheel Diesel Crankpin Grinder



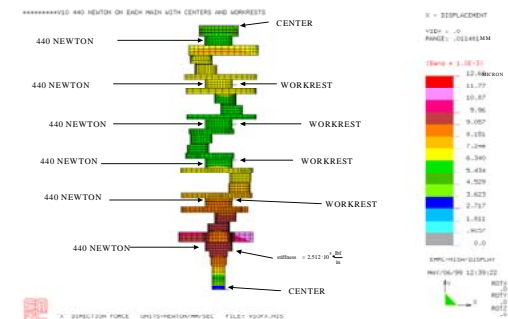
1998 - First Use of Linear Motor on CNC Cam Lobe Grinder



1998 - 6400 Control Implemented



1999 - Thrustwall Bump Grind Crankshaft Grinder



1999 - Process FEA